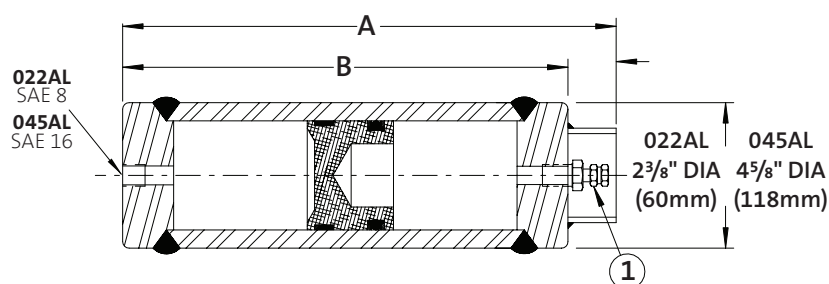


# EconoLator®

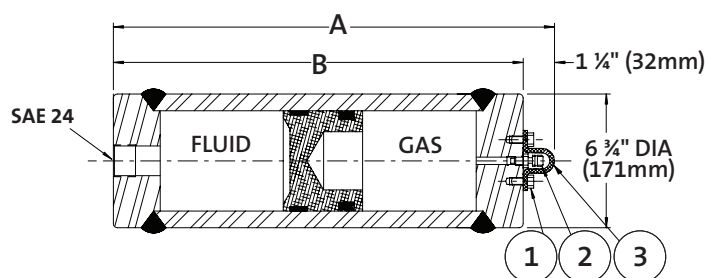
Model Number	Gas Capacity		Fluid Capacity		Dry Weight		Dimension A		Dimension B	
	In. <sup>3</sup>	Cm. <sup>3</sup>	Gallon	Liters	Lbs.	Kg.	Inch	mm	Inch	mm
022AL25-5NA09	16	257	0.0625	0.24	3	1	9.75	247	8.75	222
022AL25-1NA09	31	501	0.125	0.5	4	2	14.5	368	13.5	343
022AL25-2NA09	61	991	0.25	1	7	3	24	609	23	584
045AL25-2NA0D	74	1,213	0.25	1	15	7	10.875	276	9.875	251
045AL25-4NA0D	132	2,163	0.5	2	18	8	15.25	387	14.25	362
045AL25-8NA0D	249	4,080	1	4	23	10	24	609	23	584
045AL25-12NA0D	364	5,965	1.5	6	30	14	32.75	831	31.75	806
045AL25-16NA0D	480	7,866	2	8	36	16	41.5	1054	40.5	1,029

Fluid Capacities available for 0.25 to 3 gallons on request – Contact your sales representative for assistance.



Item Number	Part Number	Description	Number Required
1	3A-281	Gas Valve-1/8" NPT	1

Model Number	Gas Capacity		Fluid Capacity		Dry Weight		Dimension A		Dimension B	
	In. <sup>3</sup>	Cm. <sup>3</sup>	Gallon	Liters	Lbs.	Kg.	Inch	mm	Inch	mm
067AL25-8NA1F	247	4,048	1	4	56	25	16-7/8	429	15-5/8	397
067AL25-12NA1F	362	5,932	1.5	6	65	29	20-7/8	530	19-5/8	498
067AL25-16NA1F	478	7,833	2	8	73	33	25	635	23-3/4	603
067AL25-20NA1F	593	9,718	2.5	10	82	37	29	737	27-3/4	705
067AL25-24NA1F	709	11,618	3	12	91	41	33-1/8	841	31-7/8	810
067AL25-40NA1F	1,171	19,189	5	19	126	57	49-1/2	1,257	48-1/4	1,226



Item Number	Part Number	Description	Number Required
1	B-37CB1656-B	Bolt, Gas Cap, Standard 3/8-16 x 3/4"	2
2	3A-283	Valve, Gas, SST	1
3	3A-754D	Guard, Valve, Aluminum	1

Maximum working pressure 2,500 psi (172 bar)  
 Maximum proof pressure 3,750 psi (259 bar)  
 Minimum burst pressure 10,000 psi (689 bar)

Operating temperature (BUNA/Nitrile)  
 -20° to +200°F (-28° to 93°C)

TOBUL ACCUMULATOR INCORPORATED

[www.fst.com](http://www.fst.com)